



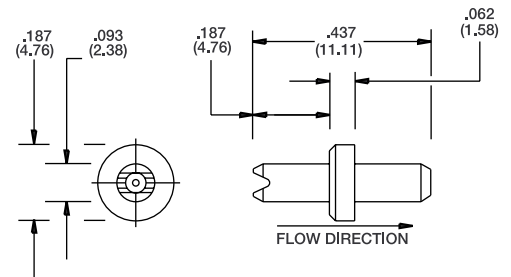
Orifice Assortment Kits

Air Logic offers Orifice Restrictors in eleven color coded sizes. The orifices are precision molded of polysulfone material and are held to flow tolerances of $\pm 4\%$. Inline orifice restrictors are available with barbs for 1/16" and 1/8" I.D. flexible tubing. The orifice restrictors are also available in 10-32 x 1/16" and 10-32 x 1/8" barbed fittings.

F-2815 Orifice Assortment Kit

The F-2815 Orifice Assortment Kit offers eleven color coded orifice sizes from .004" to .040" for use with 1/16" I.D. flexible tubing. There are five of each orifice included in this kit.

| Model No. | Size | Color |
|------------|-------|------------|
| F-2815-041 | .004" | Purple |
| F-2815-050 | .005" | Lime Green |
| F-2815-051 | .006" | Red |
| F-2815-071 | .007" | Aqua |
| F-2815-101 | .010" | Yellow |
| F-2815-121 | .012" | Black |
| F-2815-161 | .016" | Gray |
| F-2815-201 | .020" | Blue |
| F-2815-251 | .025" | Brown |
| F-2815-301 | .030" | Beige |
| F-2815-401 | .040" | Rust |



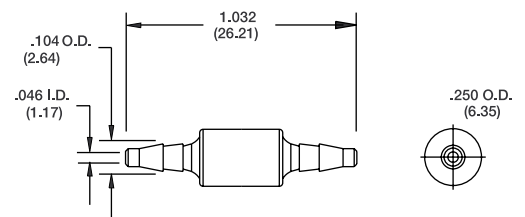
DIMENSIONS

() = Metric Dimensions

F-2815-B80 Orifice Assortment Kit

The F-2815-B80 Orifice Assortment Kit offers eleven color coded orifice sizes from .004" to .040" with barbs for 1/16" I.D. flexible tubing. There are two of each orifice included in this kit.

| Model No. | Size | Color |
|----------------|-------|------------|
| F-2815-041-B80 | .004" | Purple |
| F-2815-050-B80 | .005" | Lime Green |
| F-2815-051-B80 | .006" | Red |
| F-2815-071-B80 | .007" | Aqua |
| F-2815-101-B80 | .010" | Yellow |
| F-2815-121-B80 | .012" | Black |
| F-2815-161-B80 | .016" | Gray |
| F-2815-201-B80 | .020" | Blue |
| F-2815-251-B80 | .025" | Brown |
| F-2815-301-B80 | .030" | Beige |
| F-2815-401-B80 | .040" | Rust |



DIMENSIONS

() = Metric Dimensions