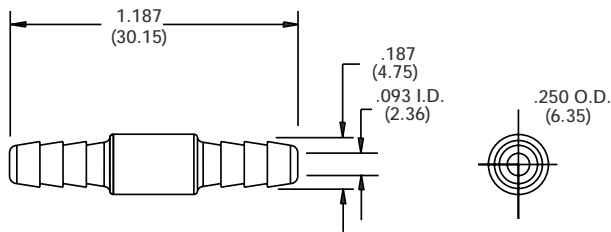


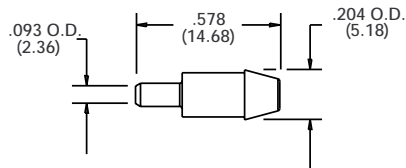
Plastic Fittings

F-3120-43 Union



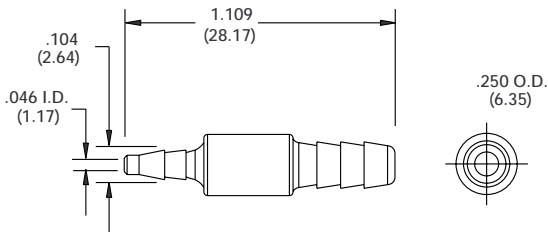
Barbed ports for $\frac{1}{8}$ " I.D. flexible tubing.
Material: Polysulfone.

F-3120-68 Barbed Reducer



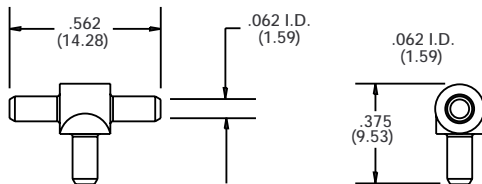
A straight port for $\frac{1}{8}$ " I.D. flexible tubing at one end
and a barbed connection for $\frac{1}{8}$ " or .170 I.D. flexible
tubing at the other end.
Material: Polysulfone.

F-3120-70 Barbed Reducer



Barbed ports for $\frac{1}{8}$ " I.D. x $\frac{1}{8}$ " I.D. flexible tubing.
Material: Polysulfone.

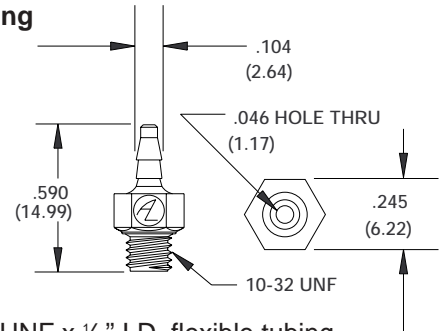
F-3145-65 Tee



Straight ports for $\frac{1}{8}$ " I.D. flexible tubing.
Material: Celcon

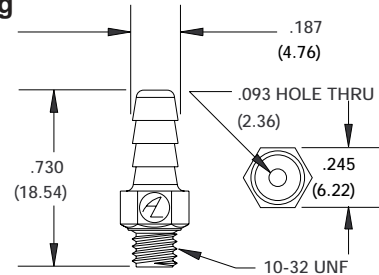
() = Metric Dimensions

F-3120-80 Barbed Fitting



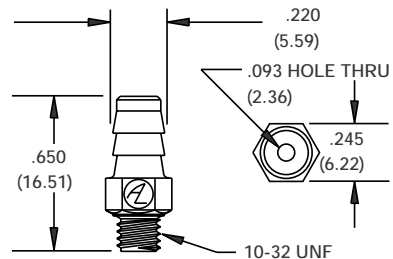
For 10-32 UNF x $\frac{1}{8}$ " I.D. flexible tubing
Material: Nylon - Black, Red, White or Blue
Polypropylene - Gray

F-3120-85 Barbed Fitting



For 10-32 UNF x $\frac{1}{8}$ " I.D. flexible tubing
Material: Nylon - Black, Red, White or Blue
Polypropylene - Gray

F-3120-86 Barbed Fitting



For 10-32 UNF x .170 I.D. flexible tubing
Material: Nylon - Black, Red, White or Blue
Polypropylene - Gray

() = Metric Dimensions